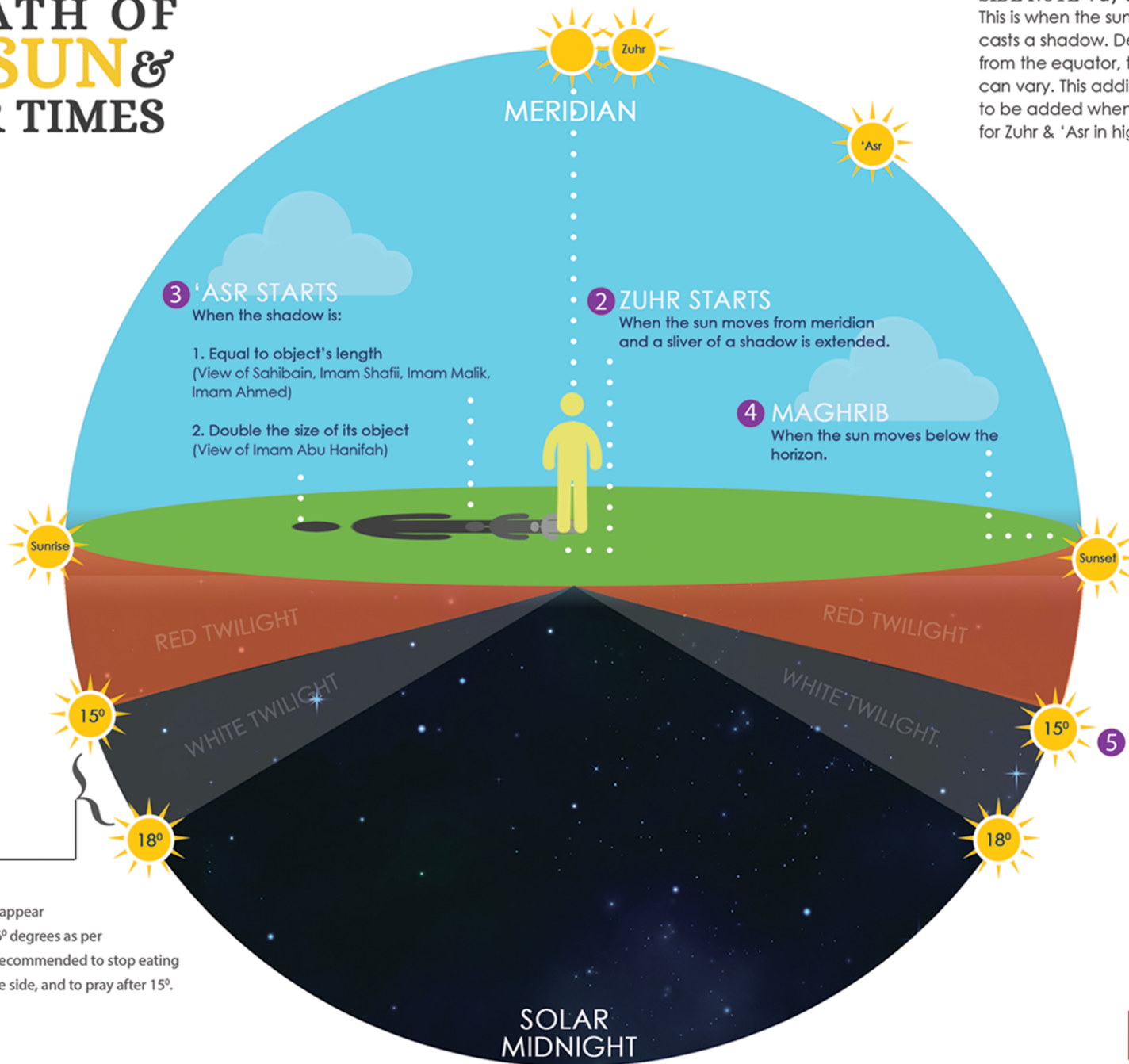


THE PATH OF THE **SUN** & PRAYER TIMES

1 FAJR

The white twilight of Fajr can appear anywhere between 17.5° to 16° degrees as per observations. This is why it is recommended to stop eating suhoor by 18° to be on the safe side, and to pray after 15° .



MERIDIAN

3 'ASR STARTS

When the shadow is:

1. Equal to object's length
(View of Sahibain, Imam Shafii, Imam Malik, Imam Ahmed)
2. Double the size of its object
(View of Imam Abu Hanifah)

2 ZUHR STARTS

When the sun moves from meridian and a sliver of a shadow is extended.

4 MAGHRIB

When the sun moves below the horizon.

5 ISHA

When the RED twilight disappears. This is when the Sun is 15° below the Horizon for Toronto, Canada.

SIDE NOTE: Fay ul Zawwal

This is when the sun hits the meridian and casts a shadow. Depending on your distance from the equator, the length of the shadow can vary. This additional shadow (fay) needs to be added when performing calculations for Zuhr & 'Asr in higher latitudes.